



# NEWSLETTER

November 24th 2023 no. 9

Dear Families,

Thank you to everyone who attended our parents consultation evenings, we hope that you found them useful. We understand that there were a number of problems with the zoom appointments, if you haven't yet been able to meet with your child's class teacher, you can either ask the school office staff to arrange a meeting or speak to the teacher on the door at the end of the day to arrange a mutually convenient time.





On a more concerning note, this week there have been a number of occasions where parents have been rude and aggressive to members of staff. Please make sure that you treat our staff with the respect that they deserve. If parents fail to follow our school rules of being Safe and Respectful, it may result on them receiving a total ban from entering the school grounds.

Finally, this week we have been voting for the 'Stars in our School'. School support staff are so often hidden behind the scenes but they are vital to the education of young people. Their roles are incredibly diverse, from cooks, cleaners and caretakers to family support advisors, teaching assistants, admin staff and school business professionals. They play a vital role in every aspect of school life and without them schools could not run. We would like to say well done to all of our support staff but particularly Miss Gray (Learning Support Assistant) and Mrs Ribeiro (IT and admin support) who were voted our winners this year. Have a lovely weekend.



Mrs Bray

## School Rewards

Teams	Emerald 	Ruby 	Sapphire 	Diamond 
Dojo points earned this week	1347	1589	1746	1541
Total Dojo points this year so far	13718	15044	14676	15653
Praise cards awarded this week	19			
Total praise cards awarded this academic year	285			

A reminder that each week a pupil is selected by the class teacher as a star learner, possibly a pupil who has demonstrated the Co-op values across the week in their learning and been a positive role model to the other pupils in the class.

	EYFS Stars	KS1 Stars	KS2 Stars	
	Nursery - Adirah RB – Reuben RH – Teddy RJ - Arie RT – Ilinca	1L – Lexi 1M – Rebeca 1S – Kelise 1SU – Lena 2AV – Leeanne 2M – Eleni 2N – Emma G 2P – Abigail FS.S – Kusang Limbu FS.H – Sanjeet	3D – Yanis 3J – Meryem 3R – Robert 3W – Sukayna 4C – Aris 4M – Savannah 4P – Emma 4W – Yousaf	5A – Imo 5B – Sophie L 5C – Khaylen 5Q - Aahil 6C – Yanniss 6M – Ilia 6R – Hanna 6S - Teni
			FS2 – Desta	

### Our Co-operative Values:

**Self Help, Self Responsibility, Democracy, Equality, Equity, & Solidarity.**

## Sports Stars of the Week



Reception	Aliza M, Amelia R, Armina C, Ilinca C
Year 1	Rebeca V, Olivia M, Yussef O & Muhammad N
Year 2	Lisa-Marie R, Ashvikkan K, Luna C & Harry W
Year 3	Arijus V, Norsin H, Dana N & Raian P
Year 4	Ameerat K, Nusaiba S, Oliwier G & Desta T
Year 5	Sienna F, Alan K, Saisha R P & Dezideria S
Year 6	Omobilaji K, Tyler S, Maaheen F & Anointing A

## TIME TABLES ROCKSTARS

Improvement in accuracy	1 <sup>st</sup>	2 <sup>nd</sup>	3 <sup>rd</sup>
Year 2	Diyana	Siddiqa	Anabia
Year 3	Migle	Ameerah	Dominic
Year 4	Rehaan	Olusola	Daiana
Year 5	David	Farida	Matthaios
Year 6	Sasi	Marshall	Tommie

## Class Dojo Champions

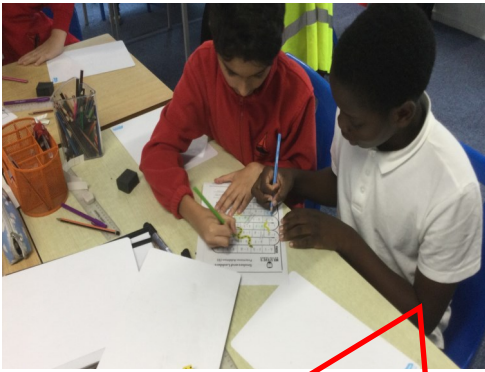
These children have earned the most dojo points in their class this week			
EYFS Champs	KS1 Champs	KS2 Champs	
Nursery – Jayden and Semnibung	1L – Erosa and Emran	3D –Harkirat & Reggie	5A – San and Suchismita
RB – Zachery and Aliza	1M – Adam and Amelia	3J – Ikhran and Ismaeel	5B – David P & Nicola
RH – Irina and Szymon	1S – Meghan and Adam	3R – Laura and Bobby	5C – Paul and Hooriyya
RJ – Florence and Shourya	1SU – Lexi and Vali	3W –Christy and Ibraheem	5Q – Joseph and Chloe
RT – Riley and Anabia	2AV – Reggie and Elsie	4C – Ariel and Olusola	6C – Rose and Haseeb
	2M – AJ and Anabia	4M – Roma and Reggie	6M – Maaheen and Ben
	2N – Elias and Olivia	4P – Zuzanna and Tautvilas	6R – Harley and Klara
	2P – Mona-Lisa and Albie	4W – Darius and Vany	6S - Armaan and Paula
	FS.S - Zayaan Uddin	FS2 – Vladut and Desta	
	FS.H – Sharleez		



### Our Co-operative Values:

**Self Help, Self Responsibility, Democracy, Equality, Equity, & Solidarity.**

**Going on around school.....**



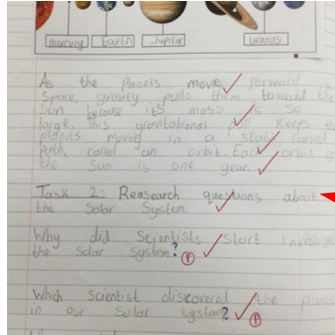
**Footsteps**

The children in the Footsteps provisions went to the Aerozone at Stansted Airport and had a fantastic time especially looking around the fire engine!



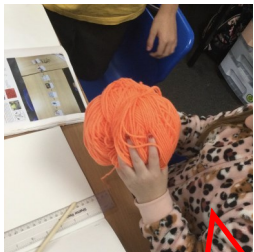
**Year 6**

In year 6 this week, pupils have been exploring all things fractions. We added and subtracted fractions whilst playing a competitive game of snakes and ladders!



**Year 5**

As part of our learning in Science, we have been learning about the different planets in our solar system. We also created a model of the Earth, Sun and the moon to support our knowledge of the Earth's orbit around the sun as well as a lunar eclipse.



**Year 4**

This week, Year 4 explored the properties of yarn. We used vocabulary describing the appearance, colours and textures. We are using these today to begin our Warp and Weft weaving!



**Year 1**

'During their Literacy lesson Year 1 have been communicating with an alien.'

**Reception**

EYFS have started looking at fairy tale stories and have been enjoying retelling them in different ways such as acting out the different characters, using puppets and verbally retelling the story.



**Year 2**

In Year 2 this week, we have been learning about Islam. We had some amazing volunteers to show us how Muslim's pray and learnt all about the features of a Mosque.



**Year 3**

Year 3 have travelled through the Stone Age to the Bronze Age. With a partner, we had to sort the key events into chronological order. We found that Bronze definitely changed everyday life or most people .



**Our Co-operative Values:**

**Self Help, Self Responsibility, Democracy, Equality, Equity, & Solidarity.**



## Dates for your diary



	Date	Year Group	Event
<b>December</b>	01.12.23	Year 5 & 6	Basketball competition
	4.12.23	Choir	St Luke's Hospice
	12.12.23	Choir	Singing at Morrisons
	13.12.23	EYFS/ KS1/ Year 3	Christmas dinner
	14.12.23	Year 4, 5 & 6	Christmas dinner
	15.12.23	Whole school	Christmas jumper day
	20.12.23	Whole school	End of Term
		<b>21.12.23 – 05.01.24</b>	<b>Whole school</b>
<b>January</b>	08.01.24	Whole School	Back to school
	12.01.24	Year 5/6	Badminton competition
	19.01.24	Year 5/6	Sports Hall Athletics
<b>February</b>	02.02.24	KS2	Swimming Gala
	07.02.23	Reception x 2 classes	Chelmsford Museum Visit
	09.02.23	Reception x 2 classes	Chelmsford Museum Visit
	09.02.24	KS1	Sports Hall Athletics
	16.02.24	KS2	Archery Competition
		<b>19.02.24 – 23.02.24</b>	<b>Whole School</b>

### Next Week's Dinner Menu

Week commencing - 6th Nov, 27th Nov, 18th Dec, 8th Jan, 29th Jan, 19th Feb, 11th Mar						
<b>Monday</b>	Quorn Hotpot	Meat Free Sausage Roll Herby Diced Potatoes	Jacket potato with a Choice of Filling	Sweetcorn	Baked Beans	Frozen Yoghurt
<b>Tuesday</b>	Chilli Con Carne Rice	Vegetable & Bean Fajitas	Jacket Potato with a Choice of Filling	Fresh Broccoli	Mixed Vegetables	Cocoa Sponge & Cocoa Sauce
<b>Wednesday</b>	Roast Gammon with Roast Potatoes	Roast Quorn Fillet with Roast Potatoes	Jacket Potato with a Choice of Filling	Fresh Cauliflower	Fresh Carrots	Fruit Jelly
<b>Thursday</b>	Cheese & Tomato Pizza with Potato Wedges	Tuna Pasta Bake	Jacket Potato with a choice of Filling	Green Beans	Baked Beans	Oat Cookie
<b>Friday</b>	Salmon Fingers with Chips	Vegetable fingers with Chips	Jacket Potato with a Choice of Filling	Peas	Baked Beans	Banana Sponge

### ***Our Co-operative Values:***

***Self Help, Self Responsibility, Democracy, Equality, Equity, & Solidarity.***



### Attendance

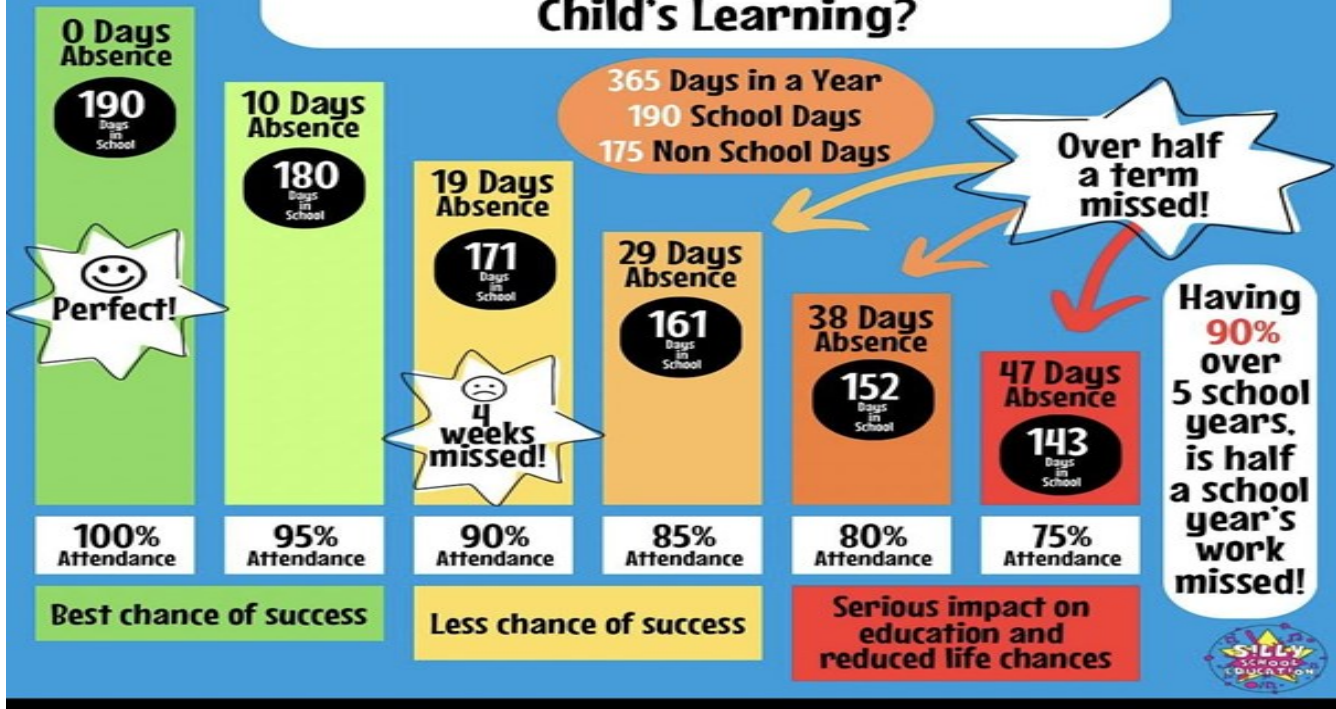
A gentle reminder that children should be in school by 8:50 each morning. The gates will open at 8:35 and close at 8:50... don't be late!

**This week the Attendance Awards have been awarded to:**

KS1	2P	97.7%	Miss Palmer
Lower KS2	3D	97.6%	Miss Downs/ Mr Ferns
Upper KS2	6M	97.3%	Mrs Minter
<b>Whole School attendance</b>		<b>94.6%</b>	

Please note, when pupils are absent for 3 or more consecutive days without parent contact, we may complete a home welfare check. All pupils who are absent for 3 or more days may be required to provide medical evidence

## How Does School Attendance Affect a Child's Learning?



We have had an application accepted to be part of Tesco's Stronger Starts Projects. We are hoping to raise money to buy books for our book vending machine which we use as special rewards when pupils achieve 3 praise cards.

You can use your tokens to vote for Thameside Primary in:

- Chafford Hundred Exp
- Lakeside Extra
- Armada Chafford Exp
- Grays Express
- Chadwell St Mary Expr
- South Ockendon Expres
- Tilbury Express
- Derwent Sth Ocken Exp
- Southend Rd Grays Exp
- 



Voting starts from the first week in October and will run until mid-January 2024.